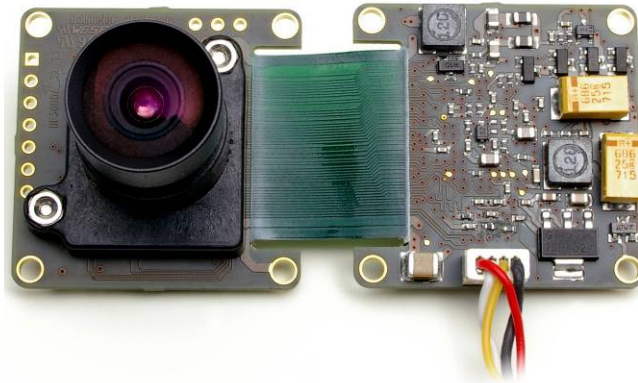


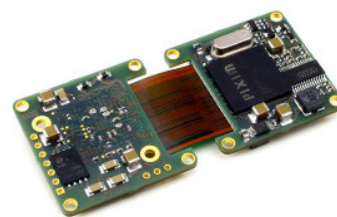
## DB3200A-kit



### Ultra Wide Dynamic Range 32x32 flex Boardcam incl. HiRes lens and IR Cut Filter

The DB3200A-kit flex Boardcam is based on the breakthrough Cam\_inPIX® technology:

- Highly integrated two-chip set based on Pixim's innovative Digital Pixel System® technology
- Pure Digital Signal Processing of the **Cam\_inPIX®** technology enhances dramatically the dynamic range up to 120 dB
- 1/3" Digital Pixel System® -DPS- sensor allows multi-sampling capture for images high in details
- Wide dynamic range provides excellent image quality in high-contrast environments
- High sensitivity for low-light images; up to 0.8 lux with F1.2, 50IRE
- Progressive scan image capture and Progressive With Segmented Frames -PsF- Image data transmission suppress all kind of artefacts
- IR Cut Filter included for excellent colour reproduction
- Advanced noise reduction
- Enhanced image quality by means of numerous control options supported by DPS technology (AWB, AGC, BLC and extended slow shutter among others)
- Included HiRes mono focal lens with F1.4 iris and f= 3,6mm focal length



**Item number**  
200.400.8

## DB3200A-kit

### Technical specifications

<b>Sensor</b>	1/3" DPS sensor -CMOS-
<b>Colour Filter array</b>	RGB
<b>Processing</b>	17-bit Digital Signal Processing
<b>Dynamic range (max)</b>	102 dB Typical - 120 dB max
<b>Image capture</b>	Progressive Scan- 50 fps /60 fps (PAL/NTSC)
<b>Image data transmission rate</b>	25 fps /30 fps (PAL/NTSC)
<b>Image data transmission format</b>	PsF- Progressive With Segmented Frames
<b>Total pixel (H x V)</b>	742 x 552 Pixel
<b>Effective pixel (H x V)</b>	720 x 540 Pixel
<b>Horizontal resolution</b>	540 H TV-Lines
<b>B/W &amp; colour mode</b>	Yes, colour mode also in night mode selectable
<b>IR Cut Filter</b>	Included –lens IR coated-
<b>Mechanical IR Cut Control</b>	Not supported
<b>Light sensitivity</b>	0.8 lux; with F1.2 & 50IRE
<b>Zoom</b>	Digital 4x
<b>Slow shutter</b>	Up to 8x
<b>Signal to noise ratio</b>	>48 dB
<b>Brightness adjustment (ALC/AE)</b>	Automatic / manual
<b>Backlight compensation</b>	BLC, adjustable Backlight zone
<b>AGC; AGC Range</b>	Brightness and gain limit adjustable; 0 dB to 48 dB
<b>Gamma correction</b>	Automatic / manual
<b>Adjustable white balance</b>	ATW, AWB, MWB (2000K to 11000K)
<b>Synchronisation</b>	Intern
<b>Configuration</b>	Outlined OSD: remote-controlled via UTC- commands
<b>Language</b>	English
<b>Video standard</b>	PAL, NTSC
<b>Signal format (Video )</b>	CVBS, 75 Ω (PAL, NTSC)
<b>Auto Iris Control</b>	DC-iris not supported
<b>Power supply</b>	12 V
<b>Power consumption</b>	App.2 Watt

## DB3200A-kit

### Mechanical specifications

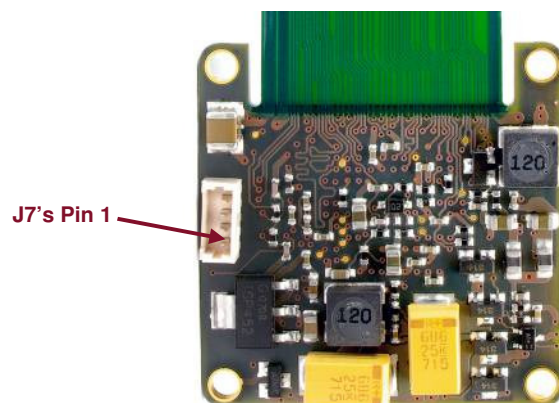
Dimension of sensor board unit (L x W)	32 mm x 32 mm
Dimension of processor board unit (L x W)	32 mm x 32 mm
Dimension of flex board (L x W)	70 mm x 32 mm (stretched)
Hole center distance	28 mm
Mounting hole diameter	4x Ø 2.4 mm
Standoffs	Required; 4 x 6 mm (L)
Flange of focal length C-mount	19.516 mm (+/- 0.475mm)
Flange of focal length CS-mount	14.516 mm (+/- 0.475mm)
Video power cable	Included
Board lens holder	Ø 12mm thread mount

### Lens specifications

Format	1/3"
Mount	12mm thread mount
Type of lens	mono focal
Iris Drive	fixed Iris
Iris range & focal length	F1.4 ; 3.6 mm
Horizontal angle of view	83.2°
IR filtering	IR coating

### Connectors Pin Assignment:

Pin	J7	Pin function
1	GND	Video interface
2	VIDEO OUT	Video interface
3	GND	Supply voltage
4	VIN , 10V<VIN<14V	Supply voltage

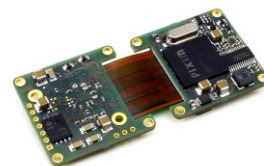
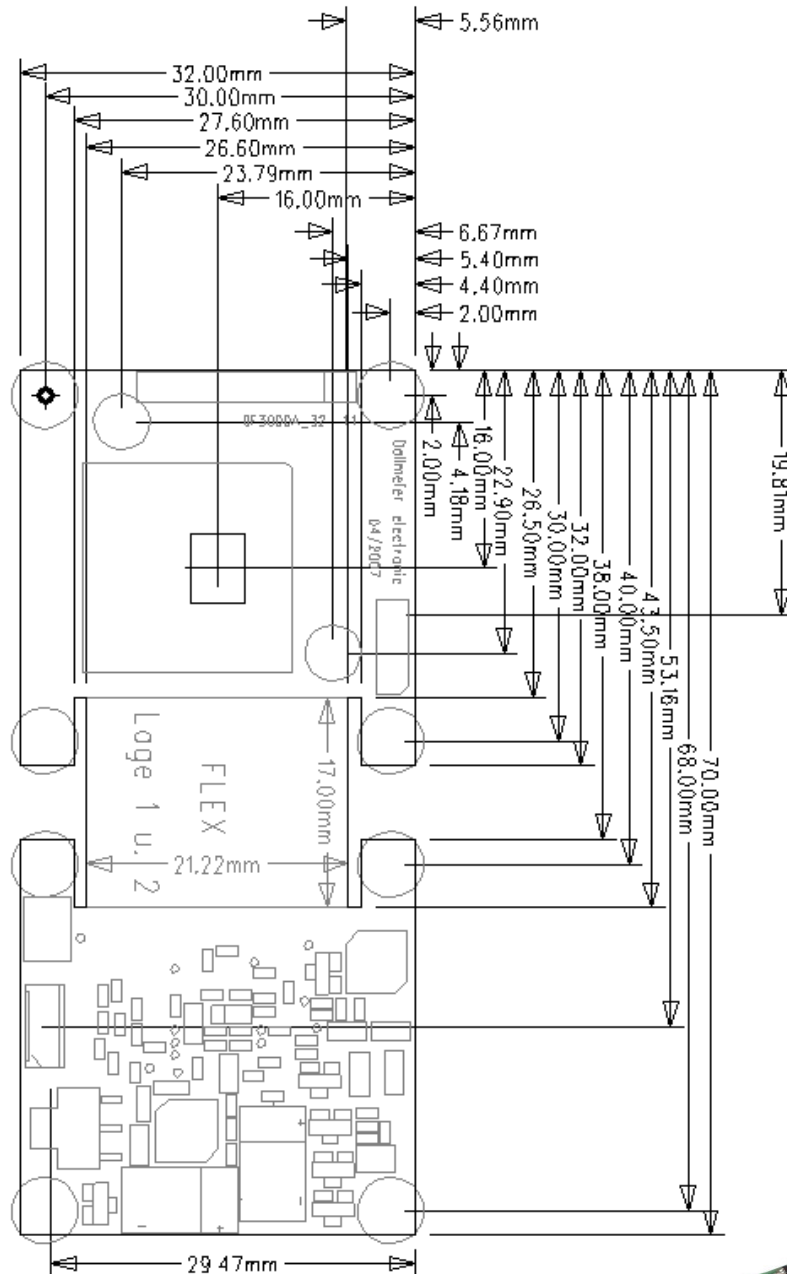


### Connector type:

J7: Molex\_ 0530470410

## DB3200A-kit

### Mechanical layout



## DB3200A-kit

### Menu configuration

