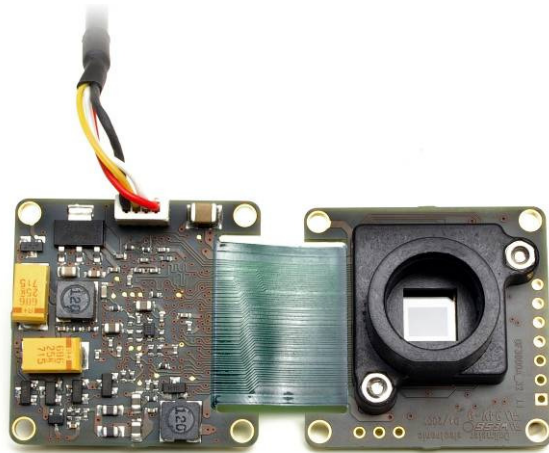


DB3200A-fh

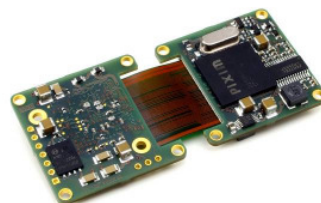


Ultra Wide Dynamic Range 32x32 flex Boardcam incl. board lens holder and IR Cut Filter

The DB3200A-fh flex Boardcam is based on the breakthrough Cam_inPIX® technology:

- Highly integrated two-chip set based on Pixim's innovative Digital Pixel System® technology
- Pure Digital Signal Processing of the **Cam_inPIX®** technology enhances dramatically the dynamic range up to 120 dB.
- 1/3" Digital Pixel System® -DPS- sensor allows multi-sampling capture for images high in details
- Wide dynamic range provides excellent image quality in high-contrast environments.
- High sensitivity for low-light images; up to 0.8 lux with F1.2, 50IRE.
- Progressive scan image capture and Progressive With Segmented Frames -PsF- Image data transmission suppress all kind of artefacts.
- IR Cut Filter included for excellent colour reproduction
- Advanced noise reduction.
- Enhanced image quality by means of numerous control options supported by DPS technology (AWB, AGC, BLC and extended slow shutter among others)

Item number
200.400.8.2



DB3200A-fh

Technical specifications

Sensor	1/3" DPS sensor -CMOS-
Colour Filter array	RGB
Processing	17-bit Digital Signal Processing
Dynamic range (max)	102 dB Typical - 120 dB max
Image capture	Progressive Scan- 50 fps /60 fps (PAL/NTSC)
Image data transmission rate	25 fps /30 fps (PAL/NTSC)
Image data transmission format	PsF- Progressive With Segmented Frames
Total pixel (H x V)	742 x 552 Pixel
Effective pixel (H x V)	720 x 540 Pixel
Horizontal resolution	540 H TV-Lines
B/W & colour mode	Yes, colour mode also in night mode selectable
IR Cut Filter	Included
Mechanical IR Cut Control	Not supported
Light sensitivity	0.8 lux; with F1.2 & 50IRE
Zoom	Digital 4x
Slow shutter	Up to 8x
Signal to noise ratio	>48 dB
Brightness adjustment (ALC/AE)	Automatic / manual
Backlight compensation	BLC, adjustable Backlight zone
AGC; AGC Range	Brightness und gain limit adjustable; 0 dB to 48 dB
Gamma correction	Automatic/ manual
Adjustable white balance	ATW, AWB, MWB (2000K to 11000K)
Synchronisation	Intern
Configuration	Outlined OSD: remote-controlled via UTC- commands
Language	English
Video standard	PAL, NTSC
Signal format (Video)	CVBS, 75 Ω (PAL, NTSC)
Auto Iris Control	DC-iris not supported
Power supply	12 V
Power consumption	Aprr.2 Watt

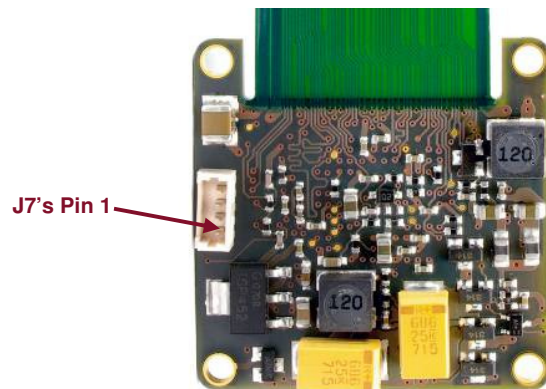
DB3200A-fh

Mechanical specifications

Dimension of sensor board unit (L x W)	32 mm x 32 mm
Dimension of processor board unit (L x W)	32 mm x 32 mm
Dimension of flex board (L x W)	70 mm x 32 mm (stretched)
Hole center distance	28 mm
Mounting hole diameter	4x Ø 2.4 mm
Standoffs	Required; 4 x 6 mm (L)
Flange of focal length C-mount	20.056 mm (+/- 0.475mm)
Flange of focal length CS-mount	15.056 mm (+/- 0.475mm)
Video power cable	Included
Board lens holder	Ø 12mm thread mount

Connectors Pin Assignment:

Pin	J7	Pin function
1	GND	Video interface
2	VIDEO OUT	Video interface
3	GND	Supply voltage
4	VIN , 10V<VIN<14V	Supply voltage

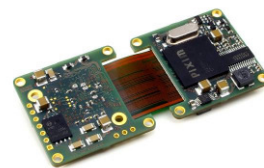
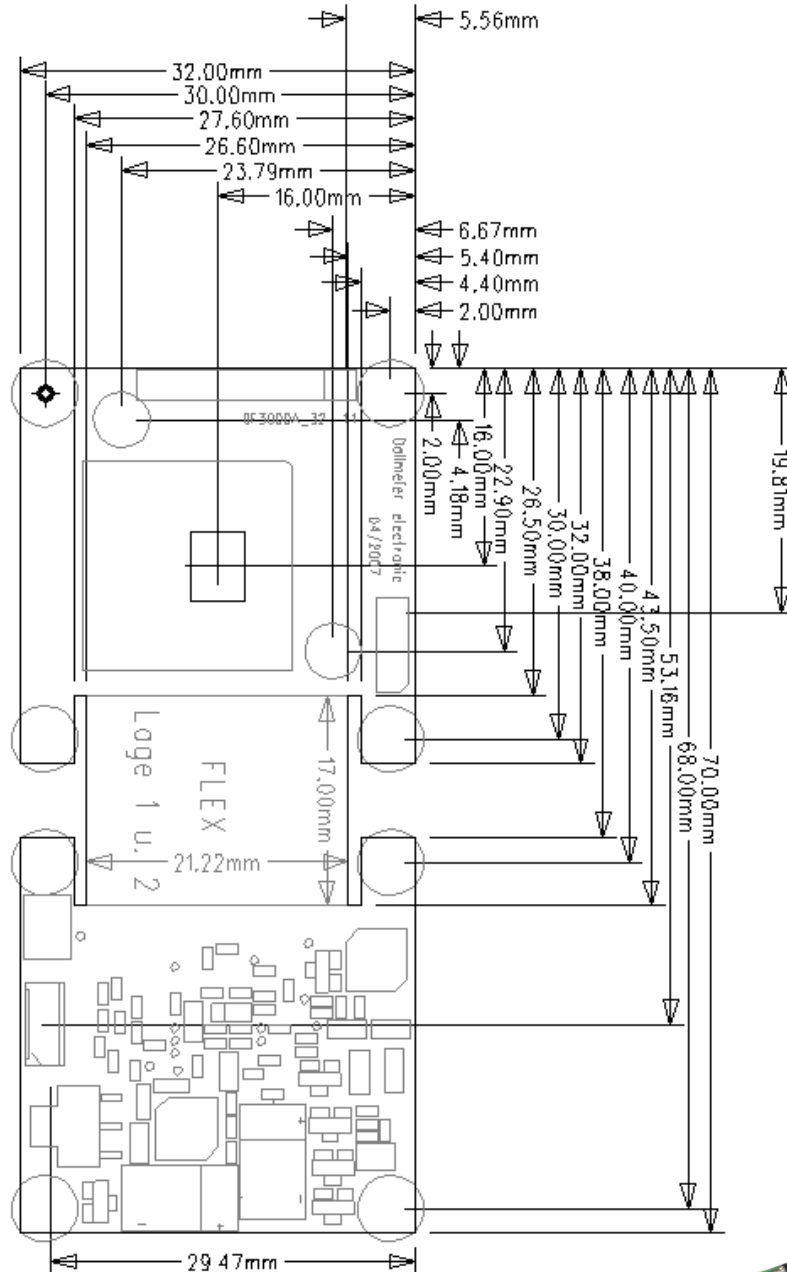


Connector type:

J7: Molex_ 0530470410

DB3200A-fh

Mechanical layout



DB3200A-fh

Menu configuration

