

Miniature Day/Night Exchanger



Fig 1. CCS-EXM-IRC21 (left), M12-EXM-IRC21 (right)

Description

The M12-EXM-IRC21 and CCS-EXM-IRC21 are IR cut-off filter exchangers that allow true day/night (TDN) operation with the Pixim DPS chipsets. For daytime operation an absorptive color filter provides true color rendition. At night, an AR coated window allows maximum light transmission.

Key Features

- Maximum light transmission in low-light conditions
- True color rendition during the day
- Designed specifically to fit the Pixim DPS chipsets
- Absorptive filter optimized for best color
- Latching solenoid requires power only to switch

Applications

- Security and surveillance camera

SUBJECT TO CHANGE WITHOUT NOTICE

Key Specifications

Key Specifications	
Description	IR cut filter exchanger
Latching Solenoid	Power required only to switch; see specs
Switch signal	±3.3V 100ms
Integrated Lens Mount	M12-EXM-IRC21: M12x0.5 CCS-EXM-IRC21: None
Day Operation	IR cut filter, IRC21
Night Operation	AR coated window
Operational Mode	Standard Mode +red, -black. Reverse anode/cathode to reverse mode
Min nominal BFL	~5mm (M12-EXM Only)

Low-Light Image Comparison



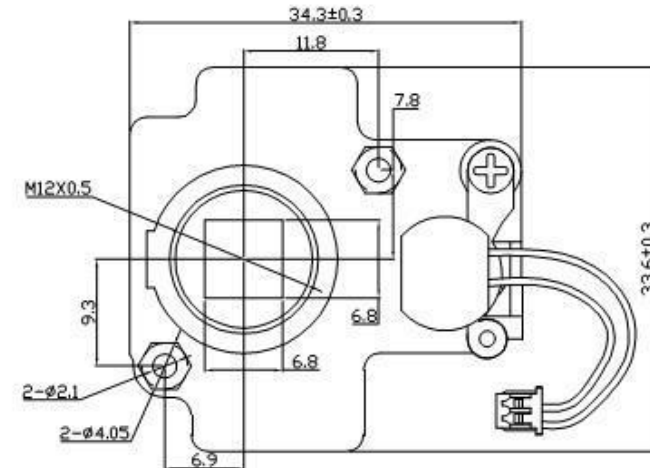
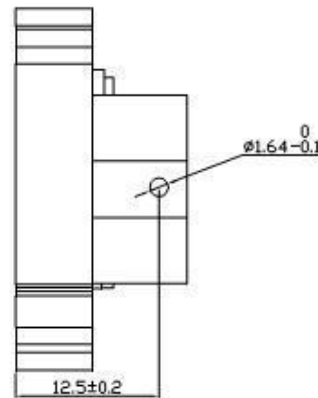
Sunex Inc.

Telephone: +001 760.602.0988

Order samples online at www.optics-online.com

M12-EXM-IRC21

Electrical and Mechanical Specifications (mm):



Note:

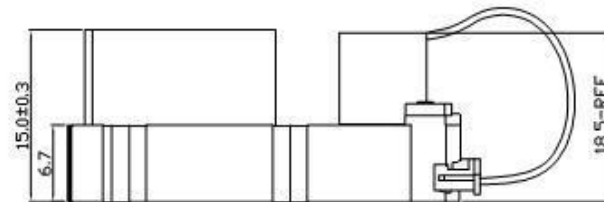
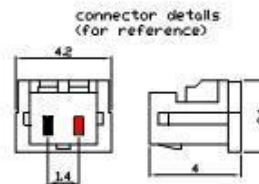
1. Holder and vane Material: PC(Black)

2. Electric specification:

Rating voltage:	3.0DCV
Power consumption:	0.6W at 3.0DCV
Work voltage:	2.5 to 3.5DCV
Rating current:	200mA
DC resistance:	15OHM +/-5 % at 20 degree
Insulation resistance:	50M OHM min at 500V
Resist voltage:	250V AC 1 Minute
Work temperature:	-10 to +40
Lifetime :	30000 times min

3. Standard 2-pin connector with >70mm wire

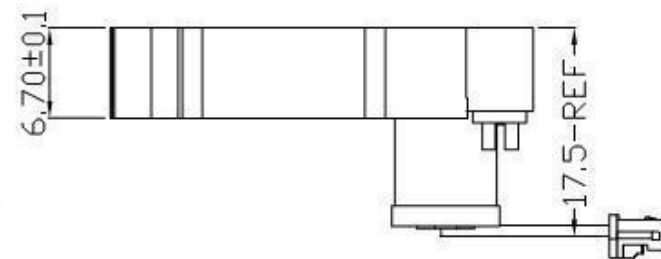
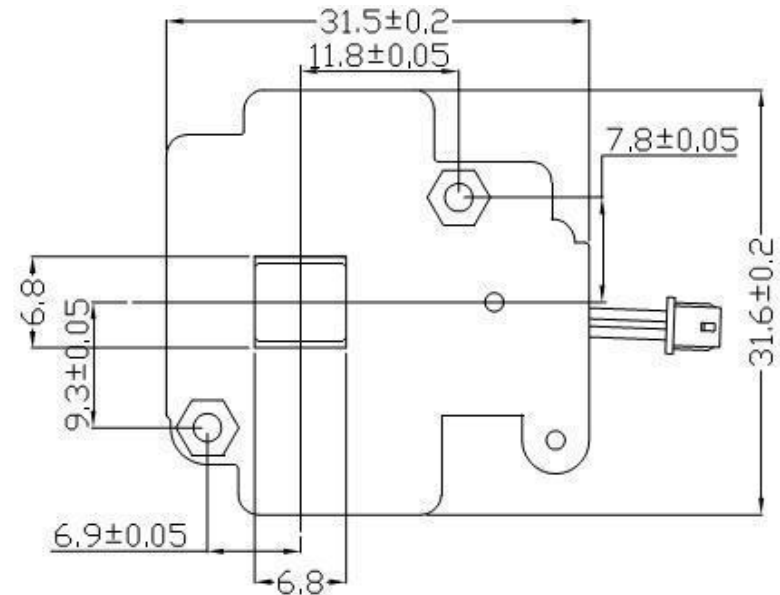
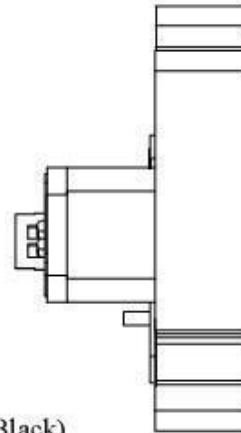
4. To reverse mode, switch anode/cathode



FOR  BY 

CCS-EXM-IRC21

Electrical and Mechanical Specifications (mm):



Note:

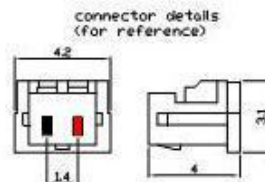
1. Holder and vane Material: PC(Black)

2. Electric specification:

- Rating voltage: 3.0DCV
- Power consumption: 0.6W at 3.0DCV
- Work voltage: 2.5 to 3.5DCV
- Rating current: 200mA
- DC resistance: 150OHM +/-5% at 20 degree
- Insulation resistance: 50M OHM min at 500V
- Resist voltage: 250V AC 1 Minute
- Work temperature: -10 to +40
- Lifetime : 30000 times min

3. Standard 2-pin connector with >70mm wire

4. To reverse mode, switch anode/cathode



FOR  **BY Sunex**
DIGITAL PIXEL SYSTEM

SUBJECT TO CHANGE WITHOUT NOTICE

Sunex Inc.

Telephone: +001 760.602.0988

Order samples online at www.optics-online.com